

**Are you
an artist?**

Register now.



**Resale Royalties
Aotearoa**
Toi Huarau

Celebrating Art, Supporting Legacy



Should I register?

We encourage **every visual artist in Aotearoa** to register.

Even if you don't expect a resale soon, registering now puts you in the system, and keeps you informed. It also helps us support you - from verifying your details securely to making sure royalties reach you, your successors, or nominated beneficiaries in the future. As your work grows in value, or finds new audiences over time, registering ensures you remain part of that story.



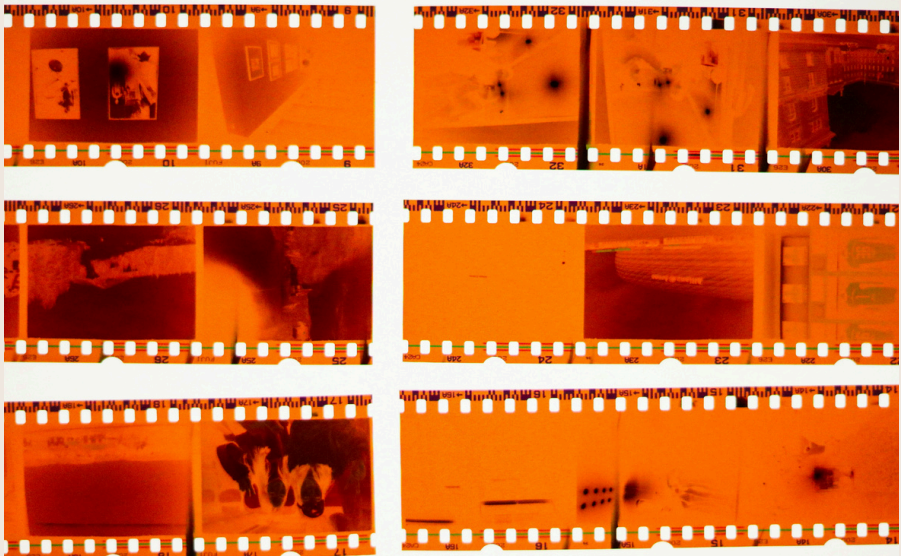
Am I eligible?

Are you a New Zealand Citizen, or a person domiciled or resident in New Zealand; or

a citizen or subject of, or a person domiciled or resident in, a “reciprocating country”. Currently UK, Australia and many EU countries, for the latest list check our website: <https://resaleroyalties.co.nz/about/partner-societies/>

Then **Yes you are eligible to register with RRA!**

If your work is resold overseas you must be registered with us before you can receive a resale royalty from one of our sister societies.



What art is eligible?

Many types of art are eligible for a resale royalty when resold for over \$2000 in Aotearoa NZ, including:

- cultural expressions of Māori or Pacific peoples;
- painting, drawing, carving, engraving, etching
- sculpture, collage, modelling;
- photography or video art;
- art created using computers or other electronic devices;
- lithography, woodcutting, printing (including books of prints);
- multimedia art;
- craftwork, ceramics, glassware, jewellery, textiles, weaving, metalware, furniture;
- ethnic or cultural art that is a variation of any type of work described above.

To be an “original”, the visual artwork must have been:

- Created by, or under the authority of, the artist; or
- One of a limited number of copies of visual artwork made by that artist or under their authority.



How do I register?

All you need to do is spend a few minutes filling in the RRA Registration Form on our website:

<https://resaleroyalties.co.nz/register/>

Once registered you will be invited to set up an account in the RRA Portal. Here you can manage your details, verify your bank details securely and review any royalty payments.

To complete the registration and verification you need two documents:

- Current ID, for example a drivers licence or passport.
- Proof of bank account letter from your bank (uploaded after registration).

Who pays the royalty:

Both the seller and the seller's agent are jointly liable to pay the royalty. If no agent is involved, responsibility moves to the buyer's agent, or to the buyer. Reports can be made up to 60 business days after the resale.

My work has been sold at auction - how do I report a resale?

You do not need to follow or report resales of your work. RRA will contact you directly once we have a royalty ready. It is the responsibility of the AMP (for example the auction house) to report any eligible resales to us.

Royalty payments are made to artists quarterly.

What is my Legacy?

The Resale Right is in effect for 50 years after your death, so your successors may continue to receive royalties during that time.

It's important to include the Resale Right and royalty distributions in your estate planning, and to understand who is eligible to receive those royalties.

Royalty Donation

You can support the long-term sustainability of the creative sector by gifting your resale royalties to an arts organisation or institution.

By assigning your resale royalty rights to an art-focused charity, trust, or institution, you can ensure that a percentage of every eligible future resale of your work is directed toward supporting exhibitions, education programmes, and the development of future generations of creators.

This approach allows the ongoing commercial success of your work to contribute to a lasting legacy, providing vital financial support to the wider arts community.

To discuss gifting your resale royalties to a charity, trust, or institution of your choosing, contact us for assistance at:
kiaora@resaleroyalties.co.nz

I'm a successor - what should I do?

You can register with RRA as a successor for an artist that you have inherited the resale right from.

If there are multiple successors, everyone must register individually and confirm their share.

If the artist passed away before the Resale Right came into effect on 1 December 2024, then the distribution of royalties is determined by NZ intestacy laws, rather than a will.

If the artist passed away after the 1 December 2024, then it is as per their will. If they don't have a will then the NZ intestacy law applies.

More detail on this is found on our website here: resaleroyalties.co.nz/artists/



Register:

To register with RRA and learn more about the scheme please visit:

resaleroyalties.co.nz

Contact us

Postal address: PO Box 331 488,
Takapuna, Auckland 0740, New Zealand

Email: kiaora@resaleroyalties.co.nz

Instagram: [@resaleroyaltiesnz](https://www.instagram.com/resaleroyaltiesnz)



**Resale Royalties
Aotearoa**
Toi Huarau

Celebrating Art, Supporting Legacy